

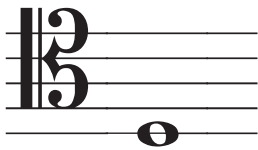


Notes on Tenor Clef



Describe and name the following Tenor Clef notes.

(eg)



line / space 1

semibreve

D

(a)



line / space ___

(b)



line / space ___

(c)



line / space ___

(d)



line / space ___

(e)



line / space ___

(f)



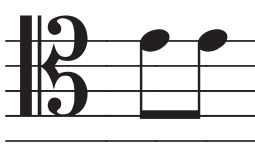
line / space ___

(g)



line / space ___

(h)



line / space ___

(i)



line / space ___

